

TRAILS BY BIKE

Route 12: Orihuela - Cox - Albatera - San Isidro - Natural Park of El Hondo - Crevillent Station

Route Card

Access by train: Orihuela RENFE Station.

Difficulty: Low.

Drop: 50 m.

Distance: 34.00 km.

Type of terrain: 31 km asphalt and 3 km earth.

Train schedules: www.renfe.es or at Tel. No.: 902 24 02 02.

Cartography: Spain's Military Map, scale 1:50,000, pages 27-35, 27-36 and 28-35.

Along the Poet's trail, as far as El Hondo Natural Park

Orihuela, place of birth of Miguel Hernández, one of the biggest Spanish poets of all times, is the starting point of this route. After visiting the house where he lived, the Poet's Trail takes us among orchards to the towns and places that served him as inspiration for his poetry. Apart from the cultural and artistic richness of the city, with many national monuments, the route runs along a highly valuable environmental milieu: El Hondo Natural Park.

Itinerary

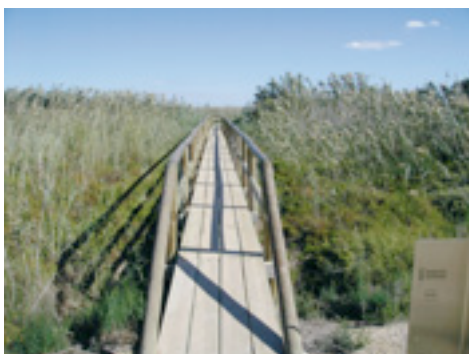
After visiting Miguel Hernández's Birthplace-Museum and Santo Domingo church, we start off along the so called Puerta de Crevillente, one of the old entrances of the walls that used to surround the city. Before the entrance, we set the distance meter to 0 at the sign indicating La Senda del Poeta: this is the direction we will take and will follow for some stretches. We come across a crossroads (0.27) and continue on the right along the Camino Viejo de Callosa de Segura. We move among orchards with views over the Callosa Mountains. We reach a roundabout (1.03) and continue straight ahead where we find "La Rotonda" hostel-restaurant. We will come across some municipal districts in the next kilometres, still preserving their traditional flavour with low houses, courtyards and orchards.



From time to time, we see the train track on our right. We arrive at a junction (2.41), where there is a house with number 106, and we take the way on the right, leading us further onto Camino Viejo de Callosa. Next we turn left. We reach a Stop signpost (3.55) and continue to the left along Camino Viejo de Media Legua. This stretch is narrow, with no hard shoulder and busy with traffic; therefore we will be cautious. At the end of the stretch (4.20), on the bend on the left, we keep on straight along a narrow and asphalted way, pedalling among lemon tree groves and farm houses. Later (5.49) the road takes a curve to the left and goes further towards the mountains. We arrive at the neighbourhood of the Cemetery of Callosa de Segura (5.68) and turn right along Calle de la Cruz, which we will follow right to the end. We go out onto the Callosa de Segura-Redován road (5.93) and before us we have a recreational area called Cueva Ahumada, where we can rest under the shade of its nice pine tree grove. We continue right onto Callosa de Segura (with caution, as we share the next 600 m with cars) and then we will reach a roundabout (6.65) with a waterwheel in the middle. We surround it and follow the directions to

Callosa de Segura. At the end of the street (7.12), we arrive at an ancient building on which facade there is a sign reading "El pollastre-rosat". This building, now in ruins, was built in 1790 and was the "Real Pósito del Grano del Común y Labradores" (the Royal Grain Stock). Here the tools of the farming trade and grains were stored for lending them to the population during times of shortage. We turn left and get off the bicycle, as this is a no-entry street. We continue along Calle Mayor (7.18) leading to Plaza de España, where Town Hall and San Mart'n church, built in 1494, are found. We continue straight along Galiana street and leave past Nuestra Señora del Rosario hermitage (7.77). We proceed along Canónigo Hidalgo street (an illustrious and beloved son of this town) and then we cross the Rambla to proceed along Convento street. We ride past a park and arrive at a small square with a monument to peace and reconciliation. We ignore the sign to "Alicante 50" and continue straight to the next Stop signpost (8.19), where we turn left. We pass between "Mercadona" and "Consum" supermarkets and continue along the first street on the left onto Callosa de Segura (8.35). We ride among orchards and soon we see Cox castle. We reach a Stop signpost (9.78) and continue straight ahead to the next roundabout (10.05). From here, if we wish we can come closer to visit the town (stop the distance meter). At the roundabout we follow the direction signpost to Orihuela and Alicante-Murcia motorway. At the next roundabout (10.43) we follow the service lane sign and then turn left into Camino de Catral. We reach a Stop signpost (11.67) and turn right. At the first crossroads we enter an asphalted road on the left (12.17), where we see a few high and somewhat stunted palm trees. We will find ourselves surrounded by lemon tree groves and pomegranate trees. We have Sierra de Crevillente and Albatera in the background, our next destination. We reach a Stop signpost (13.25), in front of which we have a concrete industrial building and we turn left. We cross the motorway over a bridge (13.86). After passing some lockgates on the right with GR marks, we take Azarbe de Patricio road (14.21). We reach a green metallic door located on our left (15.39) that is the back entrance to Parque de la Huerta de Albatera, one of the most interesting places to visit on the route. If this door is closed, we can go around the fence by going along the road on the left to arrive at the main entrance. In this case, do not forget to stop the distance meter.

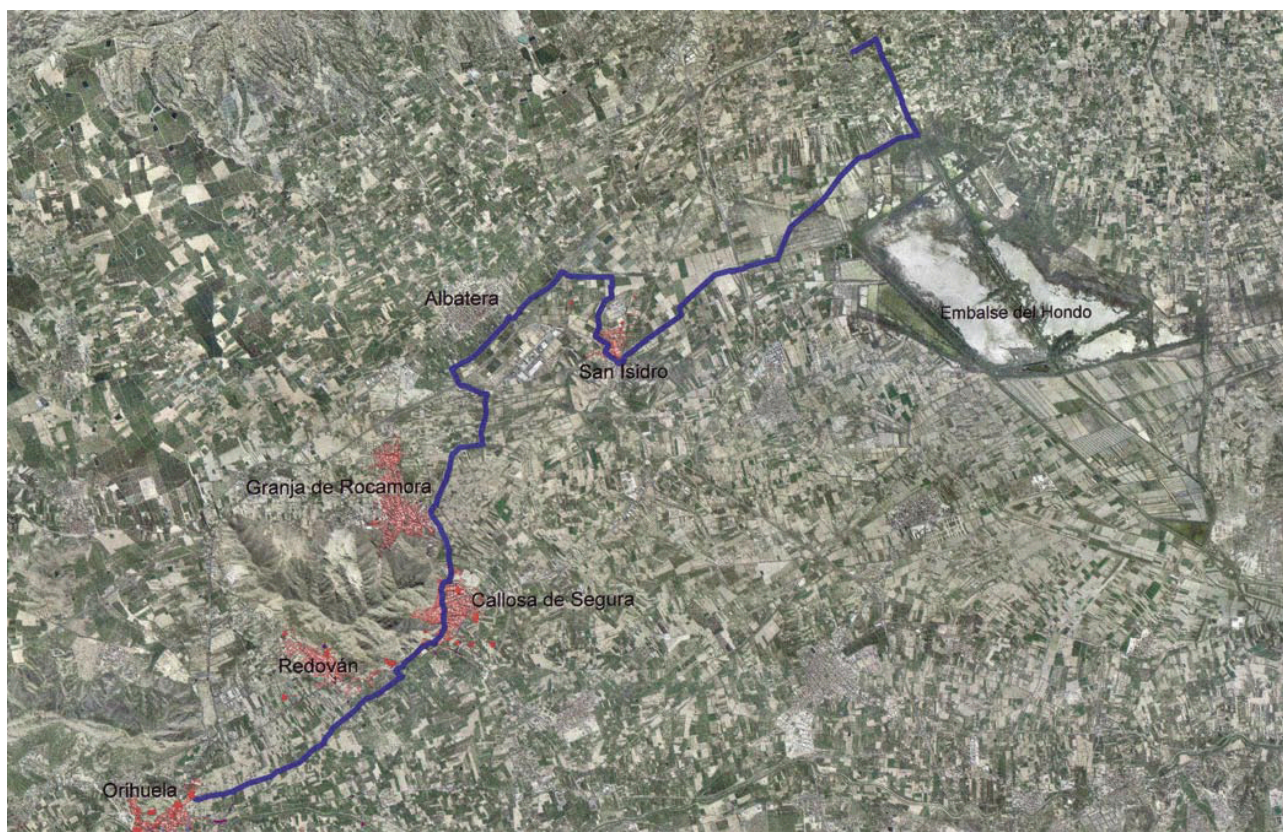
After visiting the park, we return to the previous spot and continue straight to a roundabout (15.78). We take the sign reading "camino" and follow once more the GR marks. Later, we follow the Senda del Poeta sign post, on the right, to pass under a bridge above the motorway (17.25). We pedal along a plain full of pomegranate and palm trees. At the distance, on our right, we see the first San Isidro houses. At the next Stop signpost (18.75) we turn right, reach a road (19.05) and follow the sign to Almazara. We pass the cemetery. Then reach a roundabout and continue straight onto a small palm tree grove. At the second roundabout (19.91), we continue straight once more. We reach a Stop signpost (20.31). On the left we have a marvellous park and church of San Isidro on the right. We proceed left and on the give way sign, go right (20.41). We reach the roundabout (20.59) and at the town's population sign we stop the distance meter if we wish to visit San Isidro.



To resume, we cross the train tracks across the pedestrian crossing. Once at the train station, we pass among the houses and turn left (21.01). Then we take the road on the right (21.19) where a memorial monument to a concentration camp reminds when in 1941 a large number of Miguel Hernández's fellow mates and 17,000 prisoners at some point were detained. We soon enter a marshland zone. We ignore a road on the left (21.76) and continue straight along, where there is signpost reading: "Fomento sobre mejora de caminos rurales". We come out onto another way (22.82) and turn left. A few meters further we see a lockgate on the right, part of a concrete construction and, right after passing it (22.99), we continue along a dirt

road on the right. We climb up to the right (24.31) over a bridge, at the end of which we turn right pedalling between the canal and a large palm tree plantation. We arrive at a road (25.32),

get across it and continue straight onto the El Hondo Natural Park information centre (26.29). Once we have visited the Information Centre, we return to the road (27.30) and turn right, always bordering the northern perimeter of the park. Just before passing a small bridge over a canal (31.33), we come across a road lined with palm trees on the left, along which we continue to reach a Stop signpost (32.10). We cross the road and take the asphalted way ahead. Right before the bridge rise crossing the tracks (33.50), we turn left along an asphalted way. Few metres later we see Crevillent station on the left (34.00).



DIPUTACIÓN
DE ALICANTE
ÁREA DE MEDIO AMBIENTE